

## Traffic Lights / LED Light / LED Traffic Light 890

**LED Traffic Light 230VAC RD/GN**

**Part No.:** 890.030.68

**MECHANICAL DATA**

|                              |                                |
|------------------------------|--------------------------------|
| Length                       | 154 mm                         |
| Height                       | 349 mm                         |
| Diameter                     | 150 mm                         |
| Materials                    | PC<br>PC/ABS                   |
| Dome colour                  | Green<br>Red                   |
| Housing colour               | Grey                           |
| Protection category          | IP65                           |
| Connection                   | Push-in terminal               |
| cross-sectional area minimum | 0,75mm <sup>2</sup> / 19AWG    |
| cross-sectional area maximum | 1,50mm <sup>2</sup> / 16AWG    |
| Cable entry                  | Screwed cable gland            |
| Cable entry minimum          | d = 5 mm                       |
| Cable entry maximum          | d = 8 mm                       |
| Tension relief               | Present (conforms to VDE)      |
| Type of fixing               | Base mounting<br>Wall mounting |
| Working temperature minimum  | -20°C                          |
| Working temperature maximum  | +50°C                          |
| Weight with packaging        | 1240 g                         |
| Product weight               | 1120 g                         |

**ELECTRICAL DATA**

|                             |                          |
|-----------------------------|--------------------------|
| Operating voltage           | 230V                     |
| Operating voltage type      | AC                       |
| Operating voltage frequency | 50Hz                     |
| Operating voltage tolerance | +/- 10%                  |
| Rated operational voltage   | 230 VAC                  |
| Rated operational current   | 80 mA                    |
| Rated inrush current        | <500mA                   |
| Protection class            | Protection class 2       |
| Pollution degree            | 3                        |
| Overvoltage category        | II                       |
| Isolation voltage           | Ui = 250V; Uimp = 2.500V |

**OPTICAL DATA**

|                      |              |
|----------------------|--------------|
| Light source         | LED          |
| Light colour         | Green<br>Red |
| Optical signal image | Permanent    |



For additional installation and mounting information, refer to the appropriate user guide at [www.werma.com](http://www.werma.com). This printed copy is for information only and is subject to alteration.

## Traffic Lights / LED Light / LED Traffic Light 890 **LED Traffic Light 230VAC RD/GN**

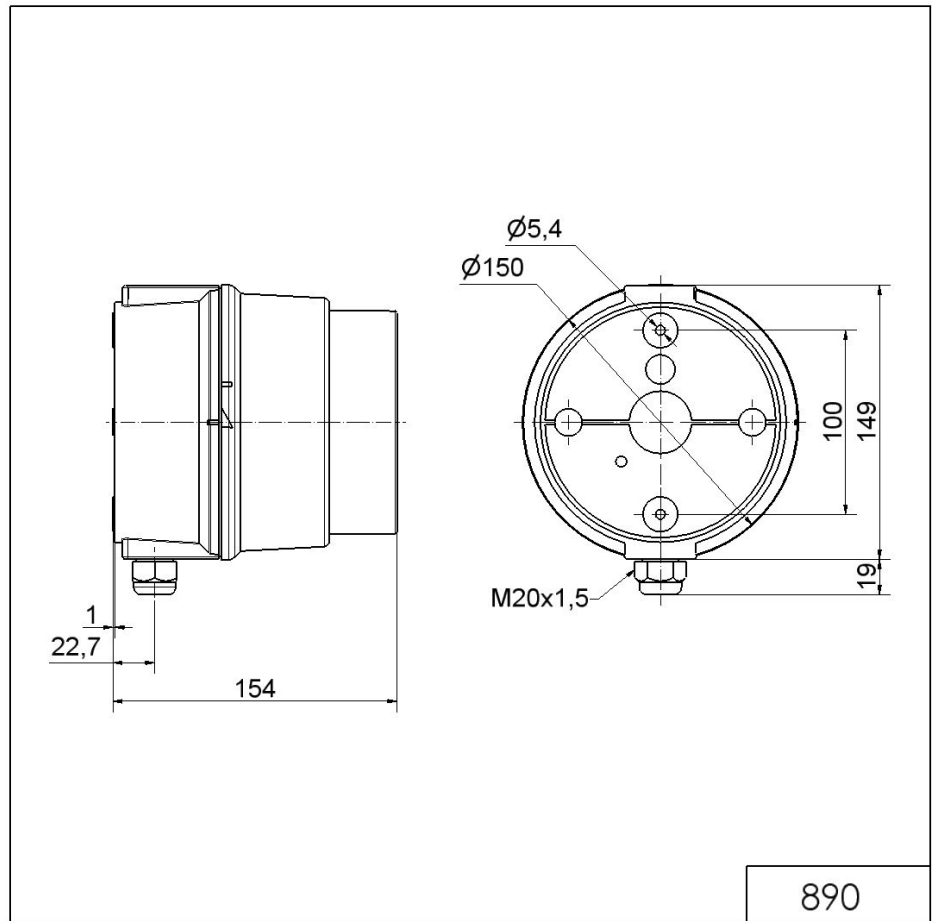
|                      |                  |
|----------------------|------------------|
| Service life optical | 50,000 h maximum |
|----------------------|------------------|

| APPROVAL DATA                |                                |
|------------------------------|--------------------------------|
| Conforms with CE             | No                             |
| Conforms with RoHS directive | Fulfills substance restriction |
| WEEE                         | Yes                            |
| Conforms with ATEX-directive | No                             |
| Conforms with CCC            | No                             |
| Conforms with UL             | No                             |
| Conforms with FCC            | No                             |
| Conforms with IC             | No                             |
| EAC certificate available    | Yes                            |
| Conforms with AS-I           | No                             |
| ICAO Certification           | No                             |
| Conforms with DNV            | No                             |
| Conforms with RoHS CN        | No                             |
| Conforms with VdS            | No                             |

**!** For additional installation and mounting information, refer to the appropriate user guide at [www.werma.com](http://www.werma.com). This printed copy is for information only and is subject to alteration.

Traffic Lights / LED Light / LED Traffic Light 890  
**LED Traffic Light 230VAC RD/GN**

**DRAWING**



For additional installation and mounting information, refer to the appropriate user guide at [www.werma.com](http://www.werma.com). This printed copy is for information only and is subject to alteration.